



CONSERVATION MANAGEMENT NETWORK

Longwood Plains

The Spotted Pardalote or *Pardalotus punctatus* is likely to be found across our agricultural landscape particularly where revegetation works have occurred.

Share our newsletter with your new neighbours

Facilitator/Project Officer
Susan Sleigh 0447 904301
susansleigh8@gmail.com

Victorian Landcare Facilitation Funding

Part-time Facilitator (Euroa Arboretum, Strathbogie Ranges CMN & Longwood Plains CMN) for three years

Federal Government's
"Linking Landscapes and Communities: Enhancing Grey Box Grassy Woodlands"
18 months to run

Field Evening Celebration
129 hectares of creeks being protected and revegetated through "Victorian Government's Ribbons of Blue and Sashess of Green: Box Alliance project"

Ring in a Roadside Weed
(Shire of Strathbogie)
Rhonda Robinson 57942274,
0400 546560

Longwood Plains Conservation Management Network

VOLUME 1, ISSUE 15

JANUARY 2022



Landcare Facilitator Funding

We are pleased to announce that the Euroa Arboretum's application for a part-time Landcare Facilitator for a project titled "**Granite to Goulburn Conservation Alliance**" was successful. The alliance comprises Euroa Arboretum (lead organisation), Strathbogie Ranges CMN and Longwood Plains CMN with the Facilitator funding, through the Victorian Government, running for three years from 2021/22 to 2023/24. Each of the three groups will be allocated approximately one day a week. Our aim is to work as a team but also to have our own priorities.

The key work areas that the Longwood Plains CMN had identified and are consistent with the guidelines include developing a Strategic Plan, developing a Website (which is long overdue), and running a Farm Planning course in the Longwood area (this is underway with Greg Bekker and Brad Costin and 11 landholders are participating).



Farm Planning at Molka

Alistair Tame, who works with the Strathbogie Ranges CMN, has come on-board to assist us with getting the website up, and mapping and recording of the last two decades of works. Most of the sites have already been mapped but we want to create a history including the funding source and years, and the state of the vegetation now.

We will identify landholders who have sites older than 10 years and that require more vegetation, and apply for funding to enhance and improve the conservation outcomes in these old sites.

We anticipate applying for funding for a field day to promote best practices in site preparation for on-ground projects, and also for a farm dam bus trip visiting sites that were funded in 2013/14 and learning from the experiences of the landholders involved.

We have started communicating with MLA (Meat and Livestock Australia) and Melbourne University regarding Carbon Storage 2030 - 10 million hectares by 2030.

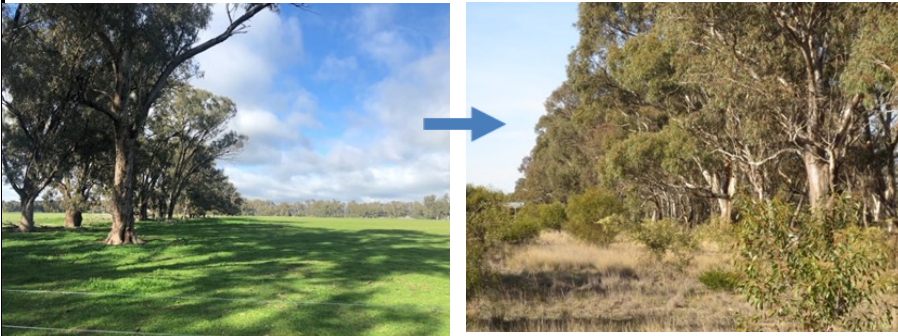
Most importantly we will be communicating with our landholder through our newsletters, local media and soon to be launched website.

We thank the Victorian Government for providing this Facilitator funding to support the our Network in promoting sustainable land management practices to protect and enhance biodiversity in the Longwood Plains.

Grey Box funding is transforming our landscape

Funding through the **Federal Government's "Linking Landscapes and Communities: Enhancing Grey Box Grassy Woodlands"** is seeing our "Longwood Plains" agricultural landscape change.

Susan Sleight, Facilitator and Project Officer says "she is proud that so many landholders are seeing the value of protecting remnant Grey Box on their properties. As the photos below show, many of the trees are stressed and ultimately, with continued stock camping and grazing, will be lost in the future."



By adding in the understorey (shrub) layer through a combination of direct seeding and hand planting, the natural bush is being restored. This along with allowing leaf litter and fallen timber to build up will allow bugs, spiders, insects a place to live and will provide ideal habitat for birds and particularly the small ones.



Direct seeding and hand planting will help restore the undersorey layer

Landholders talk of the multitude of benefits from protecting and enhancing Grey Box including the delight in hearing and see many more birds, seeing their stock benefiting from shade and shelter, the aesthetics as well as improved property values of having nature incorporated into their farms. Susan says "the funding is generous and helping to save Grey Box and transform the local landscape".

Anyone wishing to discuss potential projects should contact Susan as soon as possible as this five year Grey Box funding finishes on 30 June 2023. This Australian Government funding is supported through the Goulburn Broken Catchment Management Authority.



CREEK FIELD EVENING

In mid-December Suzie and Jack Bate hosted a field evening at their Locksley property to celebrate an amazing 129 hectares protection of creeks over the last three years.

This involved 6 landholders and 7 sites across the area (Wirrate, Whroo, Nangambie, Avenel, Wahring, Moglonemby).

Funding for the works including fencing, direct seeding and hand planting was through the **Victorian Government's "Ribbons of Blue and Sashes of Green: Box Alliance project"**.

The aim of the project was to connect the Box Ironbark Forests of Rushworth and Warby Ranges by protecting creeks and rises across this landscape.

Suzie spoke of the changes to a section of Burnt Creek through their property which they fenced and revegetated 7 years ago (under a different project). This included improved health of the remnant eucalypts, the emergence and growth of Phragmites, rushes and sedges to stabilise beds and banks, a shrub layer being established and a major benefit of water staying on their property for a longer period.

Get Involved

Contact Susan Sleight, Facilitator
0447 904301

email susansleight8@gmail.com

Our Committee 2021/22

Rhonda Robinson (President), Patricia Lete (Vice-President), Rob Heal (Treasurer), Jacqueline Palmer (Secretary), Suzie Bate, Mark Carroll, Robbie Hodges, Fiona Lewis, Erica Mercer, Donna Winter-Irving, Susan Sleight (Facilitator/Project Officer). Welcome to new member Mark Carroll.

Partners: Karen Brisbane-Bullock (Goulburn Broken Catchment Management Authority), Shelagh Curmi (Trust for Nature), Neville Wells (Parks Vic), Department of Environment, Land, Water and Planning